



Slaughter Steer Feedyard Close-Outs

Current & Future (Projected)

For the week ending September 11, 2020

Current & Future (Projected) Feedyard Closeouts: Profit/(Loss)

Closeout projections are for cattle placed on feed by a cattle owner at a commercial feedyard and not for cattle owned by a feedyard and fed at cost or a farmer/feeder utilizing his own feed. Cattle cost, cost of gain, and selling price will vary on a regional basis.

Typical closeout for un-hedged steers sold this week:

- Placed On Feed 165 days ago = March 30th
- Projected P/(L) based on the futures when placed on feed: **(\$33.22)**

Cost of 750 lb. steer delivered @ \$125.45 per cwt:	\$940.88
Feed Cost for 600 lbs. @ \$0.83 per lb.	\$498.00
Interest on cattle cost for 165 days:	\$21.27
Interest on feed cost:	\$5.63
Total Cost & Expense:	\$1,465.77

***Sale proceeds:** 1,350 lb. steer @ **\$100.91** per cwt: **\$1,362.29**

This week's Profit/(Loss) per head: **(\$103.48)**

Profit/(Loss) per head for previous week: **(\$60.26)**

Change from previous week: **-\$43.22**

Sale price necessary to breakeven: **\$108.58**

* Friday's 5 Area Daily Weighted Average Direct Negotiated Price

Projected closeout for steers placed on feed this week:

- Projected Sale Date @ 165 days on feed = February 23rd
- Sale Proceeds based on the February Live Cattle Futures Contract

Cost of 750 lb. steer delivered @ \$142.15 per cwt:	\$1,066.13
Feed Cost for 600 lbs. @ \$0.81 per lb.	\$486.00
Interest on cattle cost for 165 days:	\$20.48
Interest on feed cost:	\$4.67
Total Cost & Expense:	\$1,577.28

Sale proceeds: 1,350 lb. steer @ **\$114.32** per cwt: **\$1,543.32**

This week's Profit/(Loss) per head: **(\$33.96)**

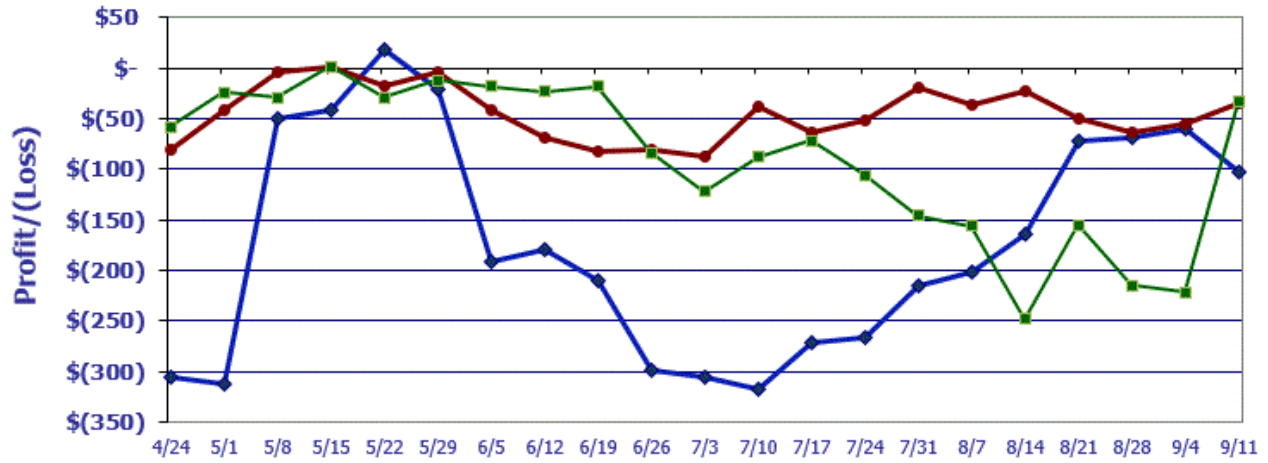
Profit/(Loss) per head for previous week: **(\$55.26)**

Change from previous week: **+\$21.30**

Sale price necessary to breakeven: **\$116.84**

Feedyard Close-Outs for the weeks ending...

www.cattlerange.com



Typical closeout for hedged steers sold this week: (\$33.22)
Typical closeout for un-hedged steers sold this week: (\$103.48)
Projected closeout for steers placed on feed this week: (\$33.96)

Feedyard Close-Outs - 5 Year Moving Averages

www.cattlerange.com

