

## The Cattle Range



# Slaughter Steer Feedyard Close-Outs

Current & Future (Projected) Closeouts: Profit/(Loss)  
For the week ending July 2, 2021

**Closeout projections** are for cattle placed on feed by a cattle owner at a commercial feedyard and not for cattle owned by a feedyard and fed at cost or a farmer/feeder utilizing his own feed. Cattle cost, cost of gain, and selling price will vary on a regional basis. Cost per head includes \$10 for freight to feedyard.

### Typical closeout for un-hedged steers sold this week:

- Placed On Feed 150 days ago = February 2nd
- Projected P/(L) based on the futures when placed on feed: **(\$77.76)**

*Cost of 750 lb. steer delivered @ \$135.65 per cwt:	\$1,027.38
Feed Cost for 600 lbs. @ \$1.13 per lb.	\$678.00
Interest on cattle cost for 165 days:	\$17.94
Interest on feed cost:	\$5.92
<b>Total Cost &amp; Expense:</b>	<b>\$1,729.24</b>
**Sale proceeds: 1,350 lb. steer @ \$124.02 per cwt:	<b>\$1,674.27</b>

<b>This week's Profit/(Loss) per head:</b>	<b>(\$54.97)</b>
Profit/(Loss) per head for previous week:	(\$20.51)
Change from previous week:	-\$34.46
<b>Sale price necessary to breakeven:</b>	<b>\$128.09</b>

\* CME Feeder Cattle Index    \*\* 5 Area Daily Weighted Average

### Projected closeout for steers placed on feed this week:

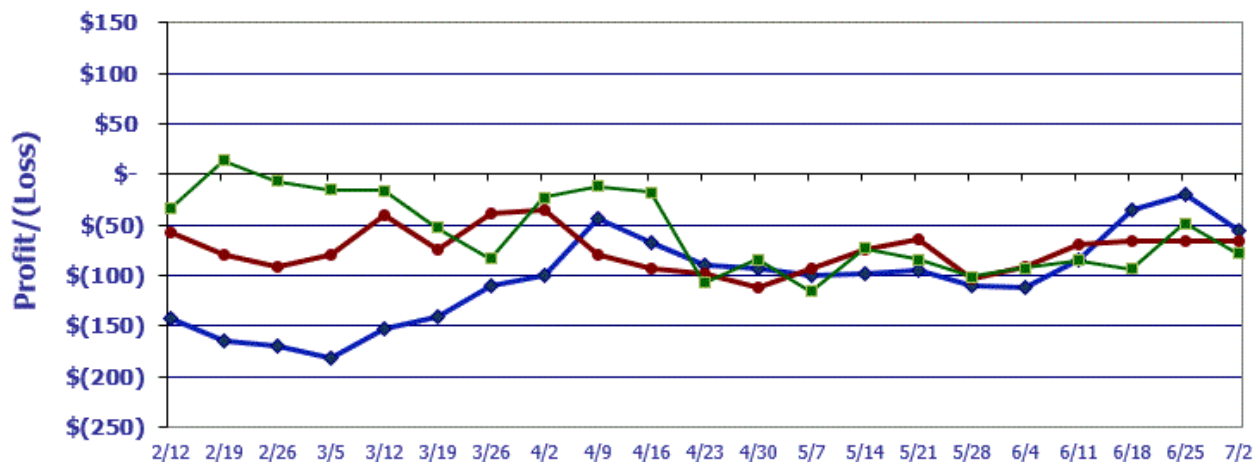
- Projected Sale Date @ 150 days on feed = November 29th

*Cost of 750 lb. steer delivered @ \$146.31 per cwt:	\$1,107.33
Feed Cost for 600 lbs. @ \$1.21 per lb.	\$726.00
Interest on cattle cost for 165 days:	\$19.34
Interest on feed cost:	\$6.34
<b>Total Cost &amp; Expense:</b>	<b>\$1,859.01</b>
**Sale proceeds: 1,350 lb. steer @ \$132.77 per cwt:	<b>\$1,792.40</b>

<b>This week's Profit/(Loss) per head:</b>	<b>(\$66.61)</b>
Profit/(Loss) per head for previous week:	(\$62.42)
Change from previous week:	-\$4.19
<b>Sale price necessary to breakeven:</b>	<b>\$137.70</b>

\* CME Feeder Cattle Index    \*\* December Live Cattle Futures Contract

## Feedyard Close-Outs for the weeks ending...



**Typical closeout for hedged steers sold this week:** (\$77.76)  
**Typical closeout for un-hedged steers sold this week:** (\$54.97)  
**Projected closeout for steers placed on feed this week:** (\$66.61)

## Feedyard Close-Outs - 5 Year Moving Averages

