

The Cattle Range



Slaughter Steer Feedyard Close-Outs

Current & Future (Projected) Closeouts: Profit/(Loss)
For the week ending April 11, 2025

Closeout projections are for cattle placed on feed by a cattle owner at a commercial feedyard and not for cattle owned by a vertically integrated company such as a beef processing company or a feedyard feeding cattle at cost. Cattle cost, cost of gain, and selling price will vary on a regional basis. Cost includes \$15 per head for freight to feedyard.

Typical closeout for un-hedged steers sold this week:

- Placed On Feed 200 days ago = September 23, 2024
- Projected P/(L) based on the futures when placed on feed: **(\$33.69)**

*Cost of 800 lb. steer delivered @ \$243.26 per cwt. + \$15 freight:	\$1,961.08
Feed Cost for 700 lbs. @ \$1.07 per lb.	\$749.00
Interest on cattle cost for 200 days:	\$102.08
Interest on feed cost:	\$19.49
Total Cost & Expense:	\$2,831.66
**Sale proceeds: 1,500 lb. steer @ \$208.00 per cwt:	\$3,120.00
This week's Profit/(Loss) per head:	\$288.34
Profit/(Loss) per head for previous week:	\$330.41
Change from previous week:	-\$42.07
Sale price necessary to breakeven:	\$188.78

* CME Feeder Cattle Index ** USDA Market News

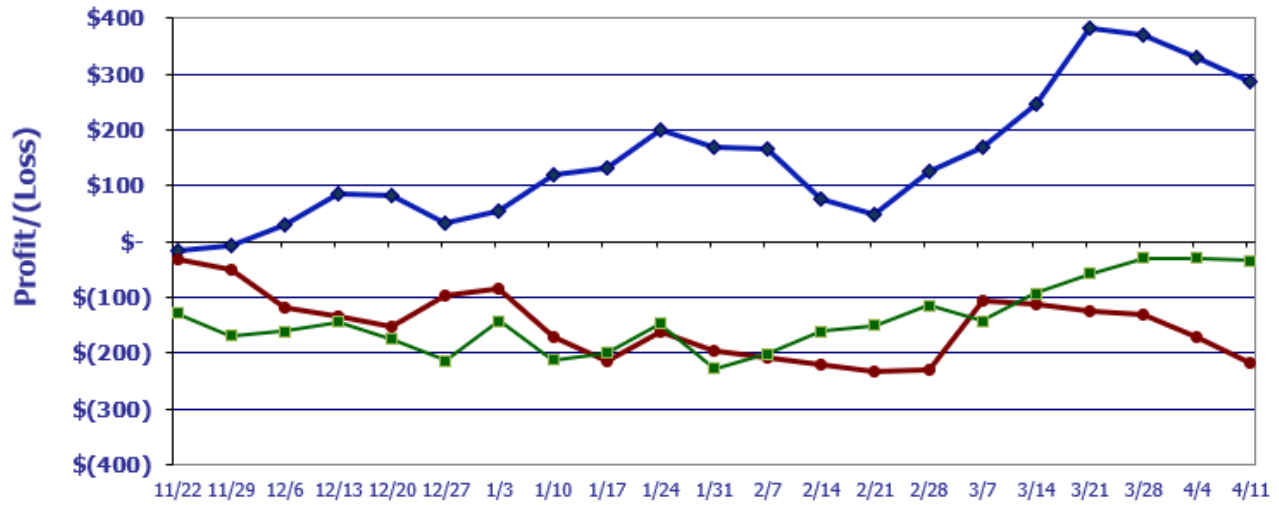
Projected closeout for steers placed on feed this week:

- Projected Sale Date @ 200 days on feed = October 28, 2025

*Cost of 800 lb. steer delivered @ \$286.13 per cwt. + \$15 freight:	\$2,304.04
Feed Cost for 700 lbs. @ \$1.03 per lb.	\$721.00
Interest on cattle cost for 200 days:	\$107.31
Interest on feed cost:	\$16.79
Total Cost & Expense:	\$3,149.14
**Sale proceeds: 1,500 lb. steer @ \$195.47 per cwt:	\$2,932.05
This week's Profit/(Loss) per head:	(\$217.09)
Profit/(Loss) per head for previous week:	(\$169.80)
Change from previous week:	-\$47.29
Sale price necessary to breakeven:	\$209.94

* CME Feeder Cattle Index ** December Live Cattle Futures Contract

Feedyard Close-Outs for the weeks ending...



Closeout for un-hedged steers placed on feed 200 days ago & sold this week: \$288.34
Projection based on the futures when placed on-feed 200 days ago: (\$33.69)
Projection based on the futures for steers placed on-feed this week: (\$217.09)

Feedyard Close-Outs - 5 Year Moving Averages...

